

Corners to be Indexed

N1/4 CORNER 4-108-41
 CENTER 4-108-41
 S1/4 CORNER 4-108-41
 N1/4 CORNER 9-108-41

SEP 27 2023

Karen Brown

I hereby certify that this document and the data contained herein was prepared by me or under my direct supervision.

[Signature]

1/11/2022
 Date

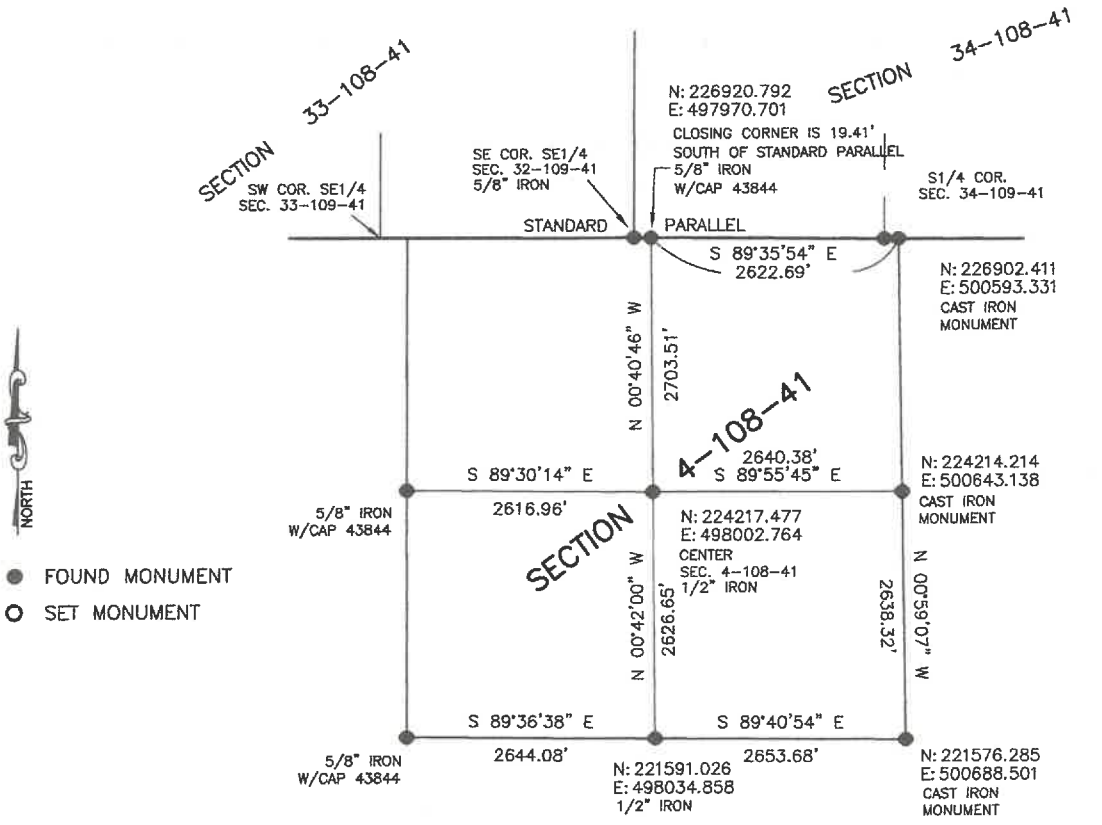
Daniel L. Bueltel

License No. 43844

CERTIFICATE OF LOCATION OF GOVERNMENT CORNER

Land survey monuments situated in Section 4, Township 108, Range 41, 5TH P.M.

STATE OF MINNESOTA, County of MURRAY



Murray County Coordinate System (1996 Adj.)

Statement of Evidence

N1/4 CORNER 4-108-41

Feb. 6, 1934 - Concrete stone with "X".

Sept. 30, 1974, Murray County Highway Department found concrete monument 8" below sod. Placed slanted steel pin over "X".

No Date - Murray County Highway Department found 1/2" iron. N: 226899.674 E: 497972.194.

May 17, 2021 - Buetlel-Moseng Land Surveying could not locate 1/2" iron. Reset corner using position provided by Murray County Highway Department.

CENTER 4-108-41

Feb. 6, 1934 - Concrete stone with "X".

Sept. 30, 1974, Murray County Highway Department found concrete monument 4" below Surface. Placed steel pin above monument.

May 17, 2021 - Buetlel-Moseng Land Surveying found 1/2" iron.

S1/4 4-108-41 (N1/4 CORNER 9-108-41)

Feb. 6, 1934 - Concrete stone with "X".

Sept. 30, 1974, Murray County Highway Department found concrete monument. Placed steel pin above monument.

May 17, 2021 - Buetlel-Moseng Land Surveying found 1/2" iron.